

# HAIR-A-LICIOUS & LASHES

## THE DIFFERENCE BETWEEN LACE CLOSURE AND FRONTAL, AND HOW TO CHOOSE?

### THE DIFFERENCE BETWEEN LACE CLOSURE AND FRONTAL, AND HOW TO CHOOSE?

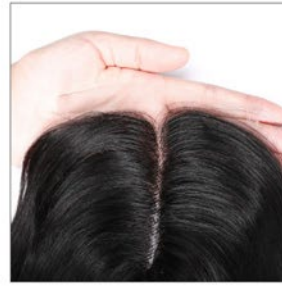
NOVEMBER 7<sup>TH</sup>, 2024

LACE FRONTAL AND LACE CLOSURE ARE TOP CHOICES TODAY FOR SEW-INS, BUT WHAT'S THE DIFFERENCE BETWEEN LACE CLOSURE AND LACE FRONTAL? WHEN CHOOSING FRONTALS AND CLOSURES FOR SEW-INS OR WIGS, WHICH ONE IS BETTER, LACE FRONTAL OR LACE CLOSURE?

ACTUALLY, IT'S NOT AS DIFFICULT TO UNDERSTAND ONCE YOU BREAK DOWN THE WORD WITH PICTURES.

#### **WHAT IS A LACE CLOSURE?**

**LACE CLOSURES** ARE USUALLY USED TO COMPLETE A SEW-IN AND TO INSTALL IT IN THE HORSESHOE AREA OF THE HEAD TO CLOSE OFF THE STYLE, HENCE THE NAME CLOSURE. LACE CLOSURES ARE INCREDIBLY POPULAR FOR THEIR ABILITY TO BLEND SEAMLESSLY WITH YOUR NATURAL HAIRLINE.



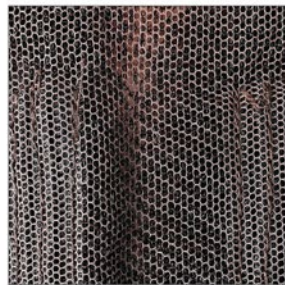
👍 Natural Hairline

👍 Pre-Plucked



👍 Protective Band

👍 Pure Hand Tied



👍 Swiss Lace

👍 150% Density



👍 100% Human Hair

👍 Soft & Smooth & Shiny

## **LACE CLOSURE SIZE**

4X4, 5X5, 6X6, AND 2X6 LACE CLOSURES, ARE THE MOST COMMON LACE SIZE OF LACE CLOSURES. SOME HAIR VENDORS ALSO OFFER A 4X0.75 LACE SIZE (T PART LACE CLOSURE), WHICH FEATURES A LACE MATERIAL IN THE MIDDLE, AND THE REST OF THE CAP IS SOFT SILK.

## **PROS AND CONS OF LACE CLOSURE:**

### **PROS:**

- ◆ **NATURAL APPEARANCE:** PROVIDES A NATURAL-LOOKING HAIRLINE AND PARTING, ESPECIALLY IF MATCHED WELL WITH YOUR SCALP.
- ◆ **LESS MAINTENANCE:** GENERALLY, REQUIRES LESS MAINTENANCE THAN A FRONTAL SINCE IT COVERS A SMALLER AREA.
- ◆ **DURABILITY:** OFTEN LASTS LONGER BECAUSE THERE'S LESS TENSION ON THE HAIR.
- ◆ **EASIER INSTALLATION:** QUICKER AND SIMPLER TO INSTALL COMPARED TO A FRONTAL.

### **CONS:**

- ◆ **LIMITED STYLING OPTIONS:** RESTRICTED TO A SPECIFIC PARTING STYLE (USUALLY MIDDLE OR SIDE).
- ◆ **LESS VERSATILITY:** CANNOT BE STYLED BACK OR PULLED UP AS FREELY AS A FRONTAL.
- ◆ **COVERAGE:** ONLY COVERS THE CROWN OF THE HEAD, WHICH MAY NOT BE IDEAL FOR ALL STYLES.

## **WHAT IS A LACE FRONTAL?**

**LACE FRONTS** EXTEND FROM EAR TO EAR, CREATING A REALISTIC HAIRLINE AND ALLOWING FOR DIVERSE STYLING OPTIONS. THEIR LARGER COVERAGE AREA SETS THEM APART, MAKING THEM A PREFERRED CHOICE FOR THOSE SEEKING MORE STYLING FLEXIBILITY.



👍 Natural Hairline

👍 Pre-Plucked



👍 Protective Band

👍 Pure Hand Tied



👍 Swiss Lace

👍 150% Density



👍 100% Human Hair

👍 Soft & Smooth & Shiny

## **LACE FRONTAL SIZE**

**13X4 AND 13X6 FRONTALS** ARE THE MOST COMMON TYPES OF LACE FRONTAL. THERE IS ALSO A LACE FRONT WIG THAT CAN HELP CREATE VERSATILE STYLES WITHOUT SEW-INS.

## **PROS AND CONS OF LACE FRONTAL**

### **PROS:**

- ◆ **VERSATILE STYLING:** ALLOWS FOR VARIOUS HAIRSTYLES, INCLUDING HIGH PONYTAILS AND UPDOS, SINCE IT COVERS THE ENTIRE HAIRLINE.
- ◆ **NATURAL HAIRLINE:** OFFERS A MORE REALISTIC HAIRLINE WITH THE ABILITY TO CREATE BABY HAIRS.
- ◆ **FULL COVERAGE:** PROVIDES A SEAMLESS LOOK FROM EAR TO EAR, WHICH CAN BE MORE VISUALLY APPEALING.

### **CONS:**

- ◆ **HIGHER MAINTENANCE:** REQUIRES MORE UPKEEP TO ENSURE IT STAYS LAID DOWN AND LOOKS NATURAL.
- ◆ **LONGER INSTALLATION:** THE APPLICATION PROCESS CAN BE MORE TIME-CONSUMING.
- ◆ **POTENTIAL FOR DAMAGE:** CAN PUT MORE STRAIN ON NATURAL HAIR IF NOT APPLIED OR REMOVED CORRECTLY.

WHAT'S THE DIFFERENCE BETWEEN LACE FRONTAL AND LACE CLOSURE?

- **LACE SIZE:**



THE MOST OBVIOUS DIFFERENCE BETWEEN LACE FRONTS AND LACE CLOSURES IS THE **LACE SIZE**. CLOSURES ARE TYPICALLY 4X4 OR 5X5 INCHES, WHILE FRONTS USUALLY ARE 13X4 INCHES. LACE FRONTS ARE MAINLY BIGGER THAN LACE CLOSURES BECAUSE THEY RUN FROM TEMPLE TO TEMPLE TO COVER THE ENTIRE HAIRLINE.

- **LACE MATERIALS:**

BOTH CLOSURES AND FRONTS ARE TYPICALLY MADE WITH EITHER LACE OR SILK. SOME FRONTS ARE EVEN MADE WITH BOTH SILKS IN THE MIDDLE 4X4 SECTION AND LACE ON EITHER SIDE.

WHILE **HD LACE CLOSURES** ARE USUALLY PREFERRED, THEY TEND TO MIMIC A SCALP MORE ACCURATELY WHEN VIEWED UP CLOSE. THIS ALLOWS LACE USERS TO ACHIEVE NOT JUST A NATURAL, BUT ACCURATE REPLICA OF THEIR OWN SCALP.

- **VERSATILITY:**

THE MAIN BENEFIT OF CHOOSING A LACE FRONTAL IS ITS UNMATCHED **STYLING VERSATILITY**. THE LACE FRONTAL CAN BE HELD IN DIFFERENT STYLES AND YOU CAN HOLD THE HAIR BACK WHEREAS THE CLOSURE CANNOT BE HELD BACK. USING A LACE

FRONTAL CAN ALLOW YOU TO TRY OUT DIFFERENT HAIRSTYLES SUCH AS MIDDLE PARTS, SIDE PARTS, OR PONYTAILS THAT LOOK NATURAL.

- **INSTALLATION:**

BOTH CLOSURES AND FRONTALS CAN BE SEWN IN OR CONSTRUCTED INTO A WIG. THEY CAN THEN BE SEWN DOWN AROUND THE EDGES OR WORN AS A REMOVABLE WIG WITH A BAND AND LAID DOWN WITH SOME HAIR GEL. BUT **WEARING A LACE CLOSURE IS USUALLY EASIER THAN A LACE FRONTAL**. SO IF YOU ARE NEW TO WIGS, LACE CLOSURE IS YOUR FIRST CHOICE.

- **COST:**

**LACE FRONTALS ARE MUCH MORE EXPENSIVE** THAN LACE CLOSURES AT LEAST \$30. MOST CUSTOMERS USUALLY COMPLAIN THE LACE FRONTAL IS EXPENSIVE, BUT THEY DON'T SEE THE STYLING ADVANTAGES OF LACE FRONTALS.

### **HOW TO CHOOSE, LACE CLOSURE OR LACE FRONTAL?**

IT DEPENDS ON YOUR STYLE OF CHOICE; A LACE FRONTAL MAY BE MORE APPEALING THAN A CLOSURE OR VICE VERSA.

\* IF YOU WOULD LIKE TO PULL YOUR HAIR BACK, THEN A FRONTAL LACE WOULD BE BEST FOR YOU.

\* IF YOU SIMPLY WANT TO CLOSE YOUR INSTALLATION WITH A NATURAL-LOOKING SCALP, THEN A LACE CLOSURE WILL BE THE BEST SOLUTION FOR YOU.

\* FOR SOME PEOPLE, A LACE CLOSURE WITH BUNDLES MAY BE A GOOD CHOICE. YOU CAN APPLY A LACE CLOSURE TO ANY KIND OF HAIR TYPE WHETHER IT IS SCANTY, PERMED, OR NATURAL.